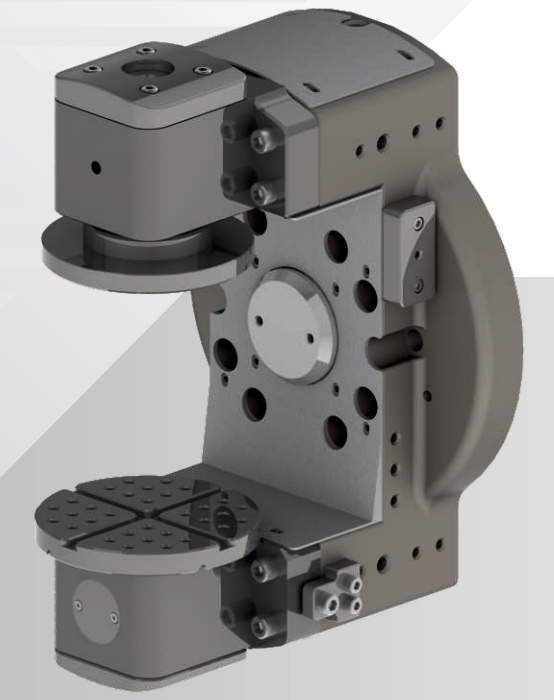




Fixture Solution

Cutting-Edge Tech &
Timeless Solutions



INNOVATION WITH
PRECISION

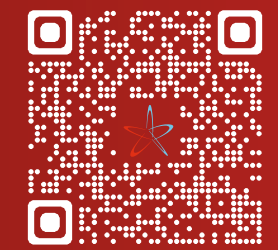
OUR GROUP OF COMPANIES

- MASCOT DIE-MOULD INDUSTRIES
- CONCEPT ENGINEERS
- MACO INC.
- ZABRO MACHINES PVT. LTD.

Contact us

Concept Engineering Solution
Survey No. 40/1, B/h. Skoda Showroom,
Rajkot - Gondal National Highway,
Village : Kangashiyali, Rajkot - 360 022, Gujarat (INDIA)
E-mail : Info@conceptfixture.com
Web. : www.conceptfixture.com

CUSTOMER SUPPORT - Mr. Kumar Zala +91 85111 05838
TECHNICAL SUPPORT - Mr. Sanjay Zala +91 96620 99442
CUSTOMER SERVICE - Mr. Rahul Zala +91 96240 88365



INNOVATION WITH
PRECISION



WELCOME TO CONCEPT ENGINEERING SOLUTION

With little experience, the concept was founded in 2008. The modern concept enjoys a positive experience with a unique concept for producing various Fixtures. Customer satisfaction is our main goal. For different engineering components, we are offering a tailored solution.

Our goal is to decrease the optimal cycle time in order to increase productivity. We're working on a project of any product created by engineering. We operate in a number of industries including mining, automotive, textiles, aerospace, and defence.

INITIATIVE

"Bridging Ideas with Solutions - Concept Engineering Solution at Its Best. Concept utilizing cutting-edge technologies and creative ideas to advance the fixture manufacturing industry."

MOTIVE

"Elevate Your Concepts with Our Engineering Solutions"

RELATION

"Our belief is that maintaining a personal touch with a valuable customer is the goal, and we respond to them promptly."

In Quality Assurance a constant effort is made to enhance the quality practices in the organization.



MEET CUSTOMERS



DESIGN DISCUSSION



DRAFTING DESIGN



IMPLEMENTATION



Our Focus is in enhancing productivity by reducing ideal cycle time. We deal with various segments like automobile, Mining, Texting, Aerospace, Defence.



"PRECISION IN TECHNOLOGY,
EXCELLENCE IN SOLUTIONS"

COLLET SECTION

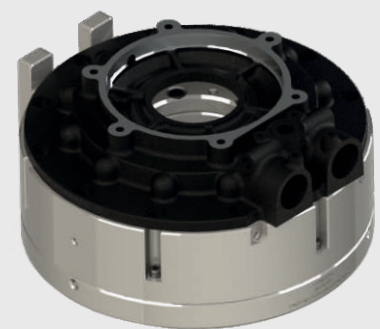
- Precision Clamping
- Uniform Clamping Pressure
- Versatility
- Reduced Tool Runout
- Compatibility with High-Speed Machining
- Pokayoke for Resting (Air Seat Sensing)



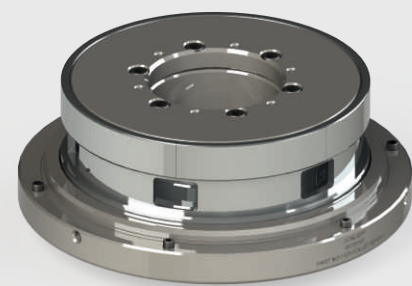
PULL TYPE STEP ID COLLET



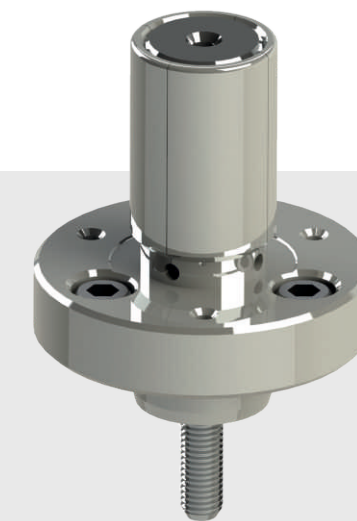
PULL TYPE COLLET



BIG DIA. COLLET



BIG DIA. COLLET



PULL TYPE COLLET



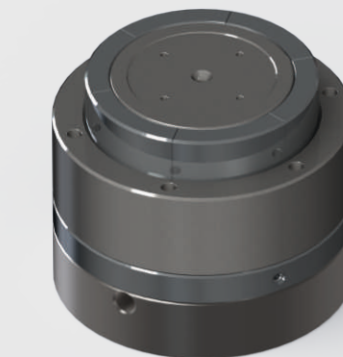
PUSH TYPE TAPPER COLLET



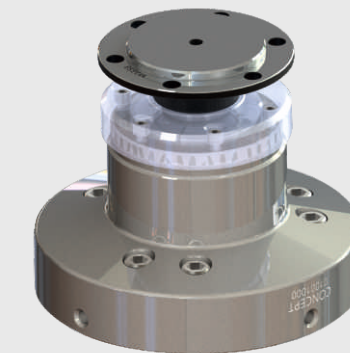
OD JELLY COLLET



ID JELLY COLLET

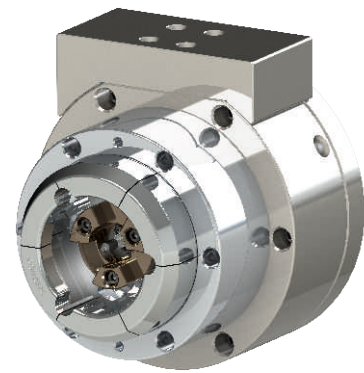


COLLET WITH AIR SEAT SENSING



OD COLLET

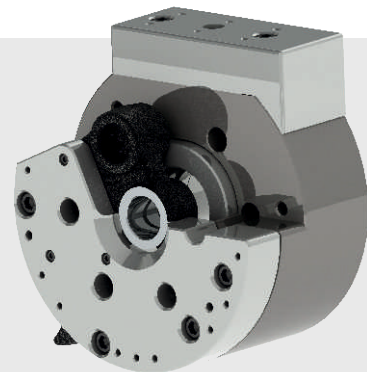
FIXTURE



ECCENTRIC CLAMPING



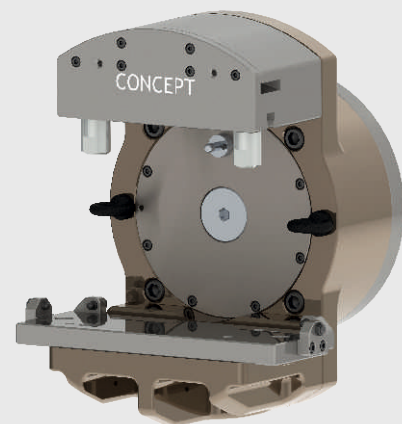
FACE CLAMPING (PULL TYPE)



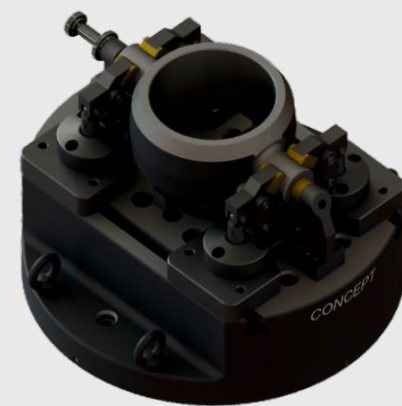
FACE CLAMPING (PUSH TYPE)



MECHANICAL CLAMPING

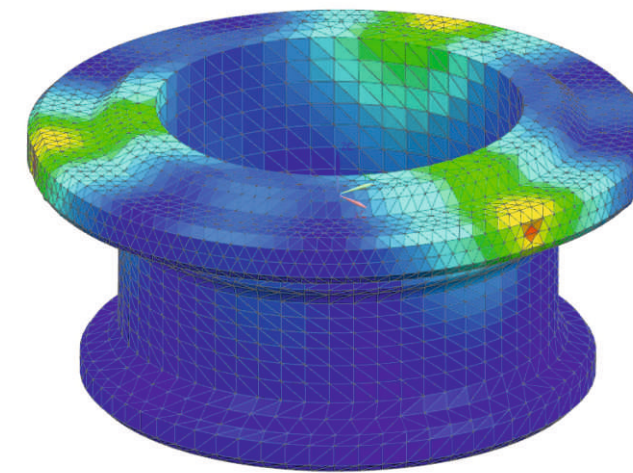


VTL HYDRAULIC FIXTURE

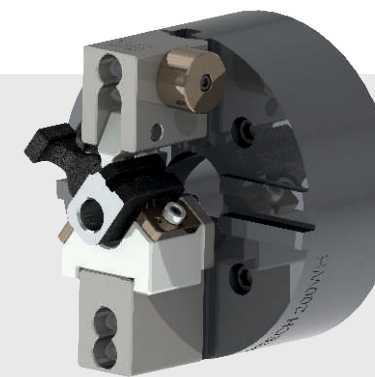
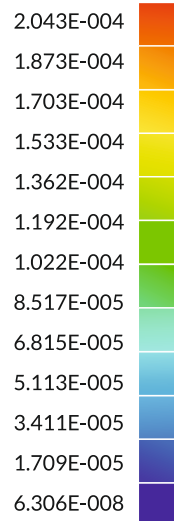


VTL HYDRAULIC FIXTURE

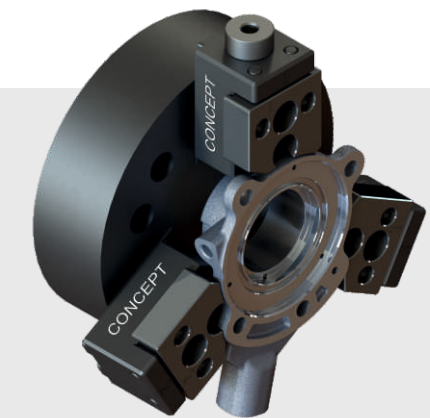
SPECIAL JAWS



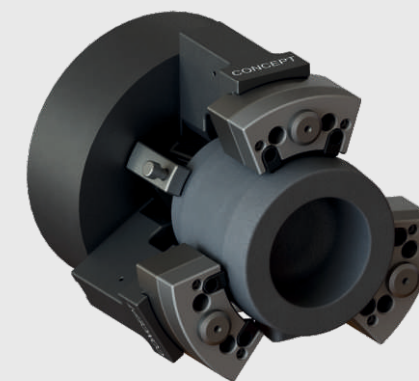
FLANGE_sim1 : FLANGE Result
Subcase - Static Loads 1, Static Step 1
Displacement - Nodal, Magnitude
Min : 6.306E-008, Max : 2.043E-004, Units = mm
Deformation : Displacement - Nodal Magnitude
Concept Engineering Solution



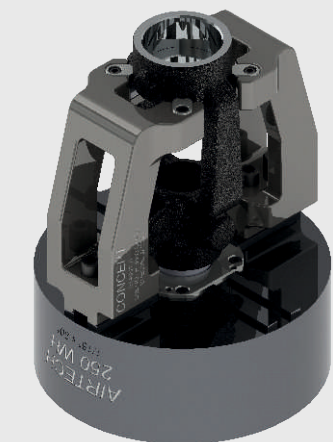
SPECIAL PROFILE JAW



SPECIAL PROFILE JAW

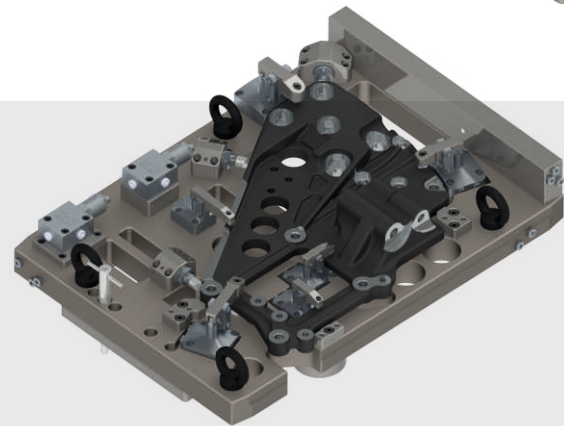
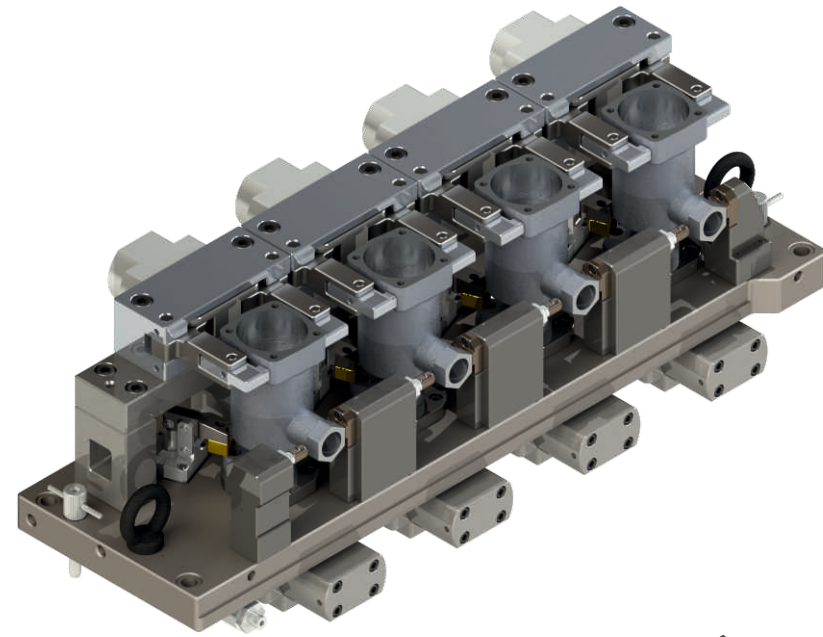


SWIVEL JAW

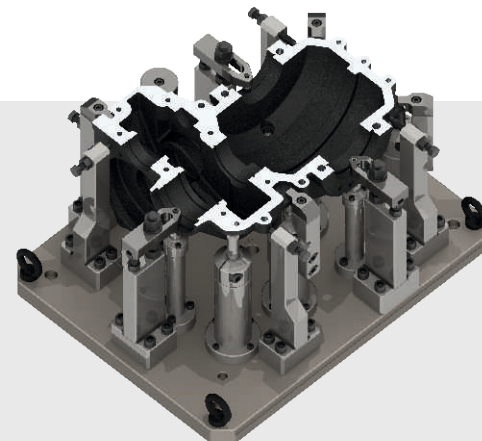


LONG JAW

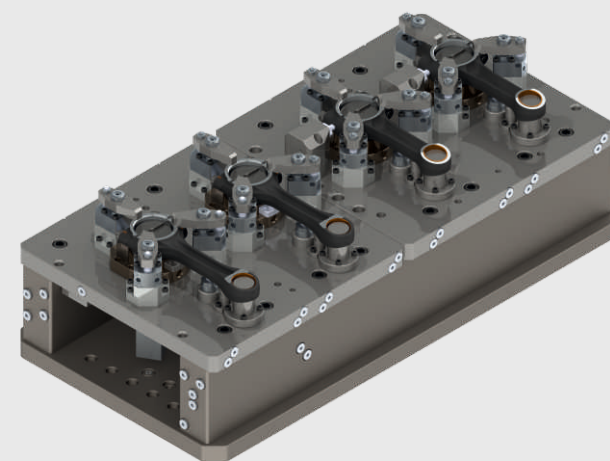
VMC



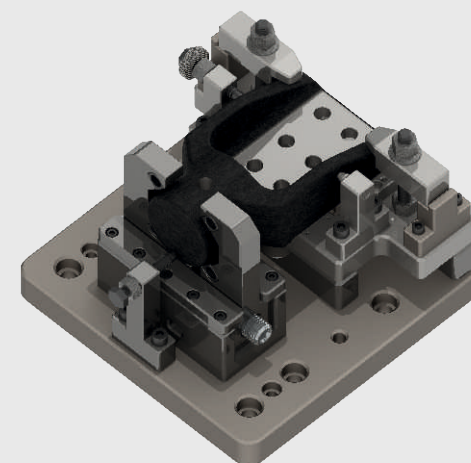
HYDRAULIC ROTARY FIXTURE



MECHANICAL FIXTURE

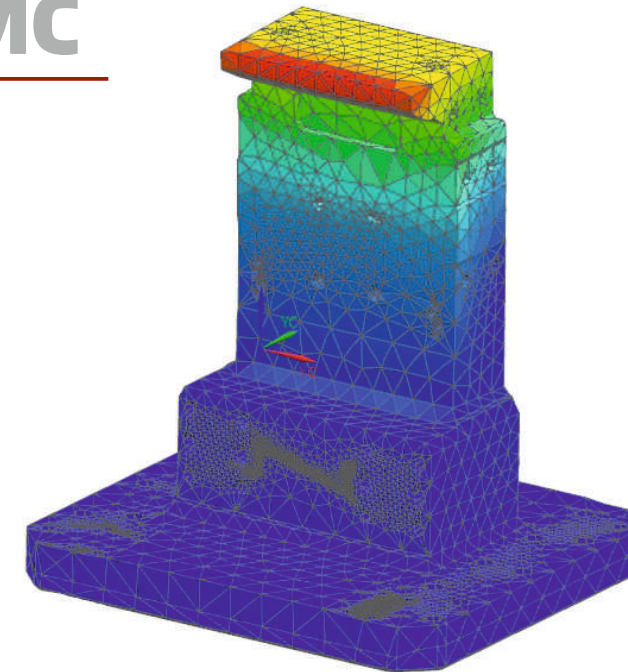


HYDRAULIC FIXTURE

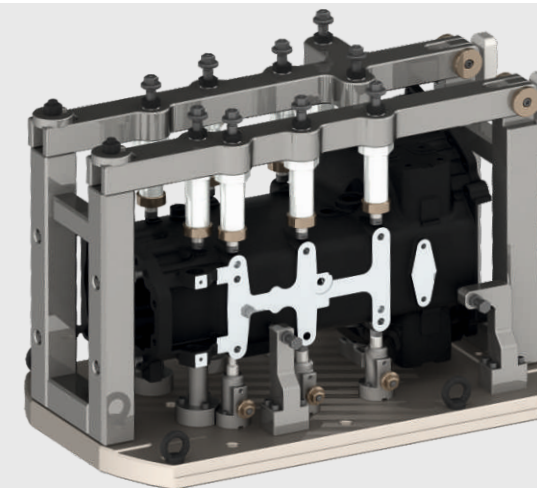
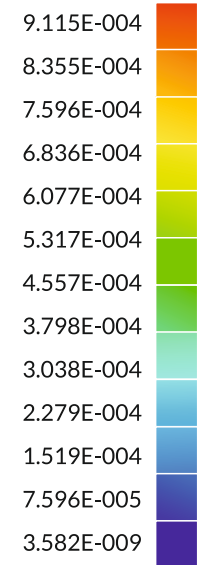


SELF CENTERING FIXTURE

HMC



Structure_sim1: STRUCTURE Result
Subcase - Static Loads 1, Static Step 1
Displacement - Nodal, Magnitude
Min: 3.582E-009, Max: 9.115E-004, Units = mm
Deformation: Displacement - Nodal Magnitude
Concept Engineering Solution



MECHANICAL FIXTURE

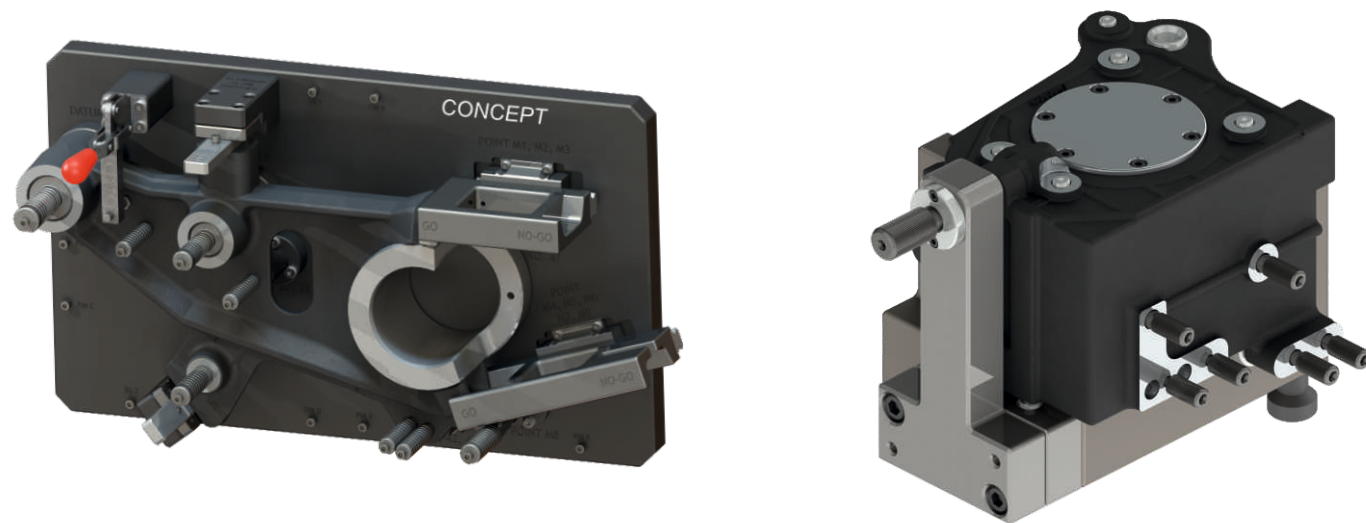


MECHANICAL FIXTURE



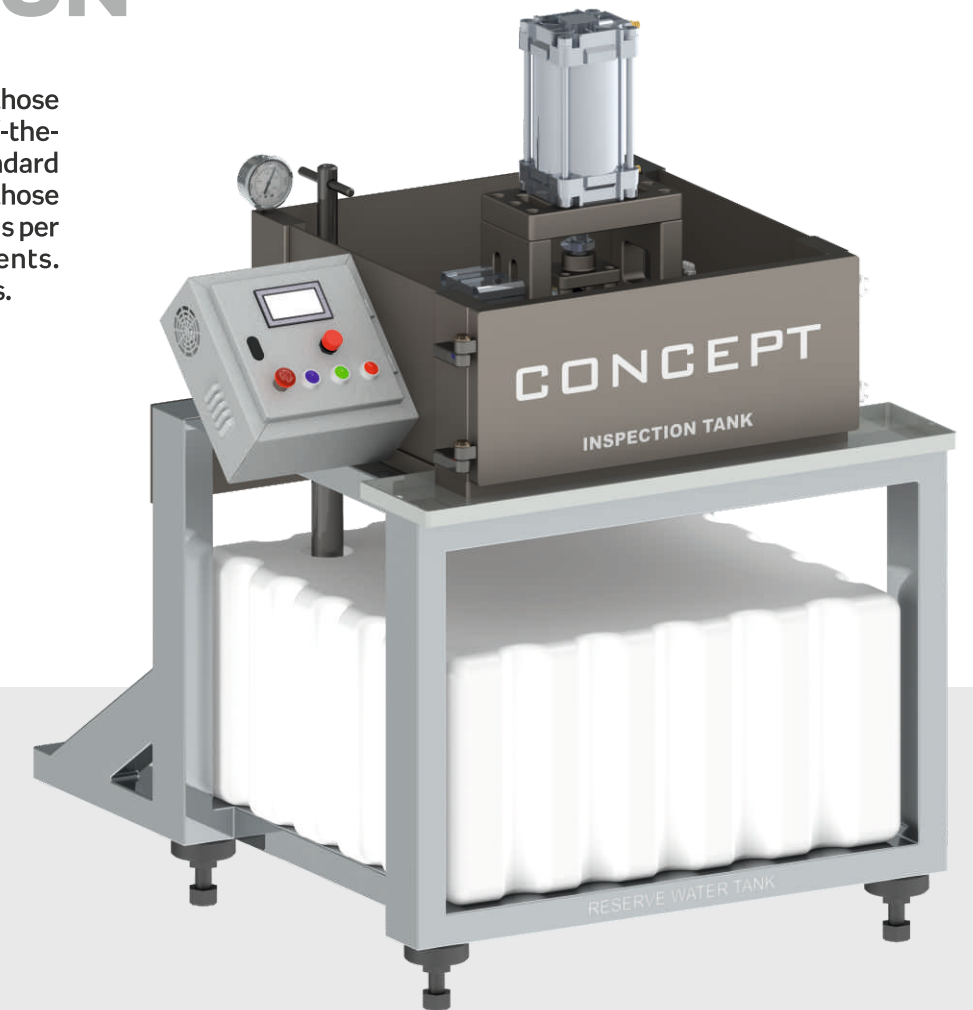
MECHANICAL FIXTURE

GAUGE

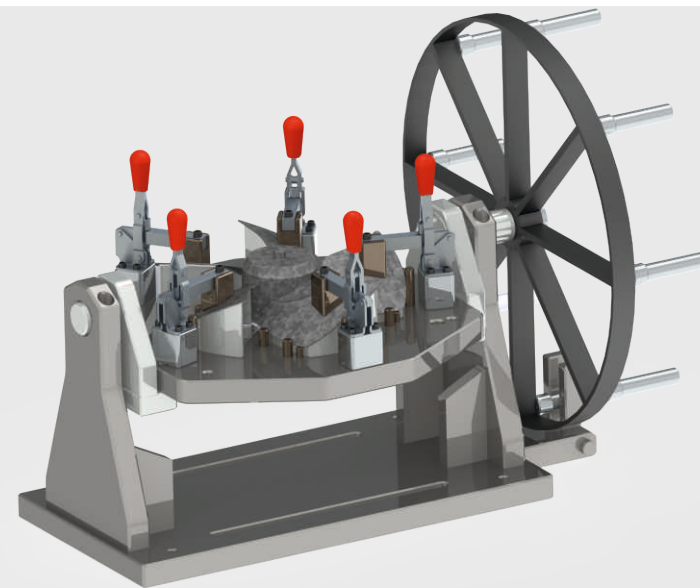


SPM SECTION

Special Purpose Machine (SPM) are those machines that are not available off-the-shelf. These are not covered in standard manufacturing programs. Therefore, those have to be designed and tailor-made as per the customer's specific requirements. They are also called bespoke machines.

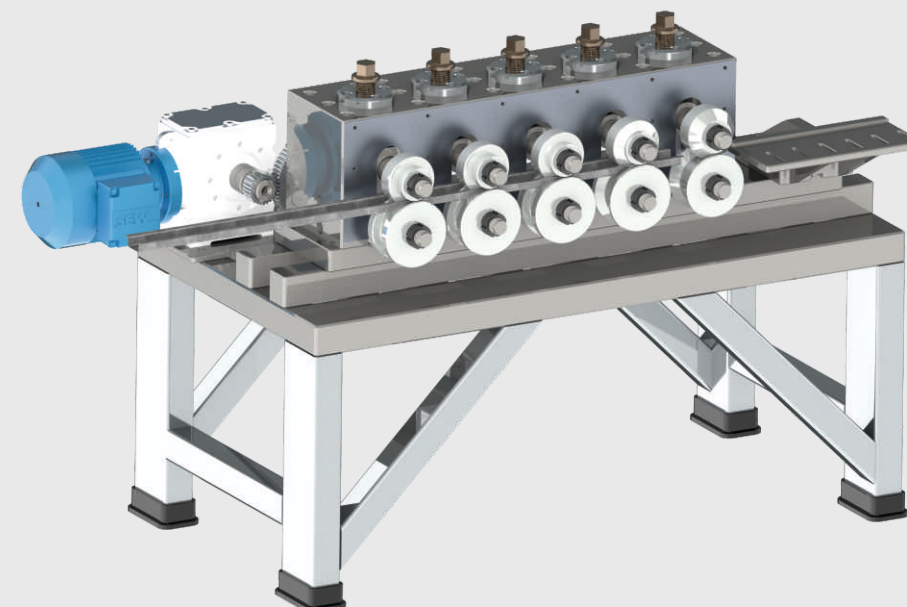
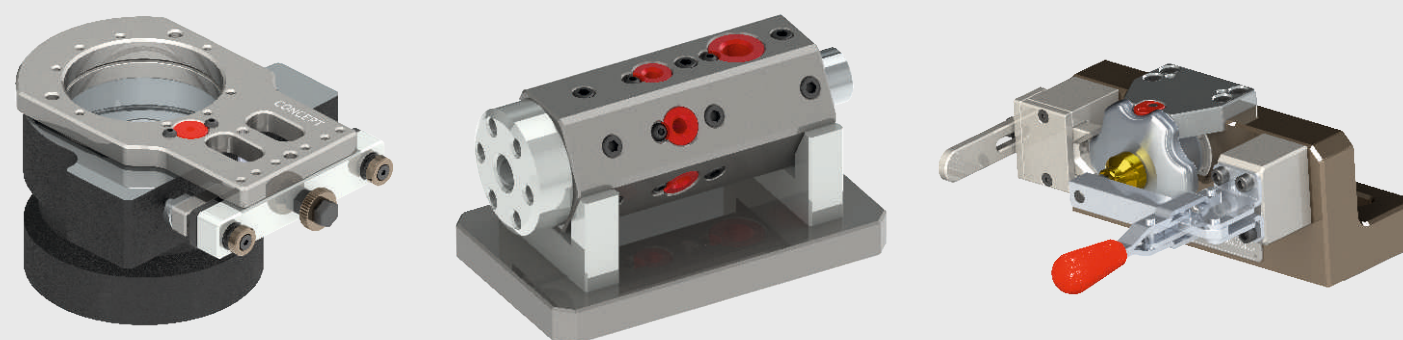


WELDING FIXTURE

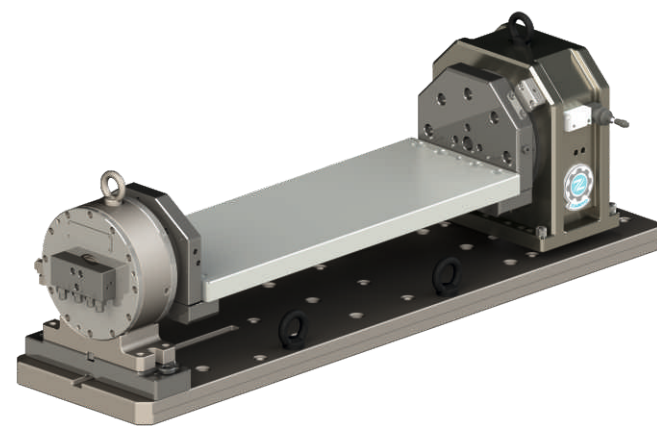
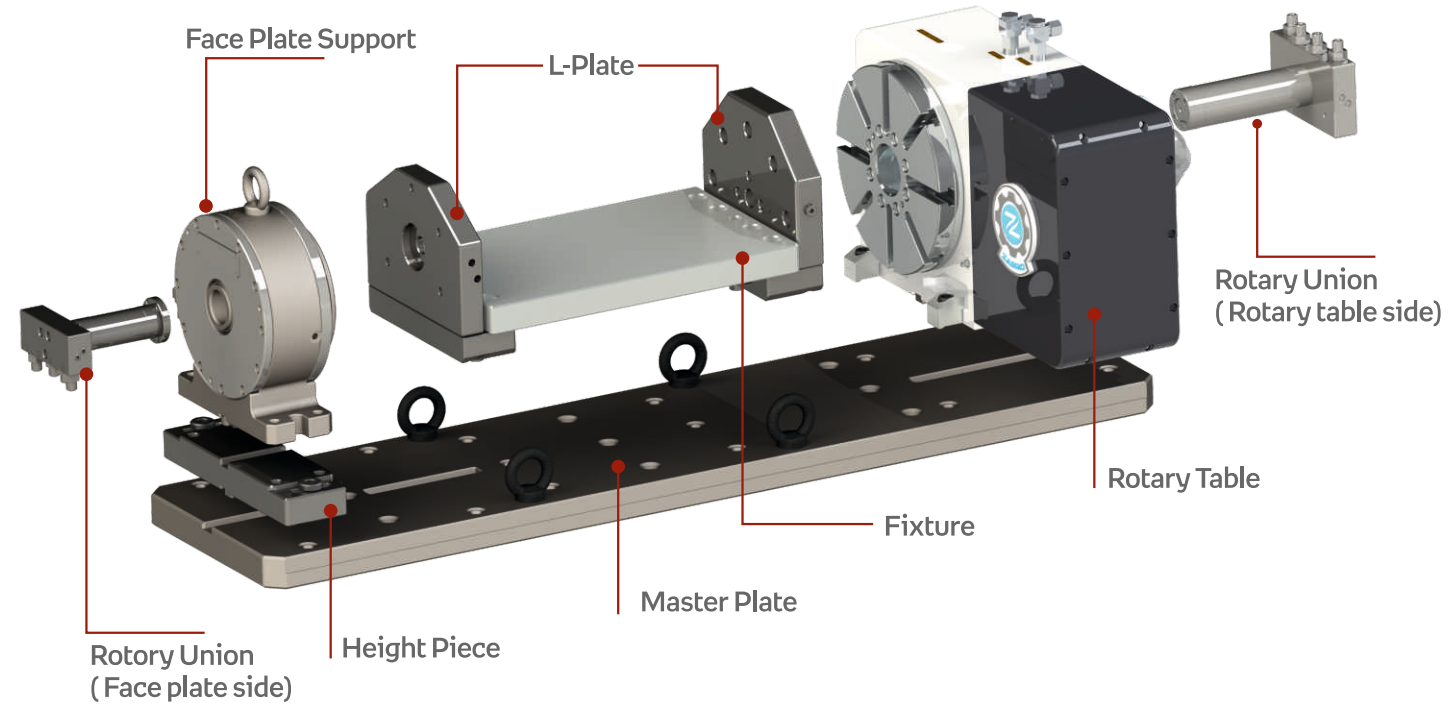


PRESSURE TESTING MACHINE

DRILL JIG

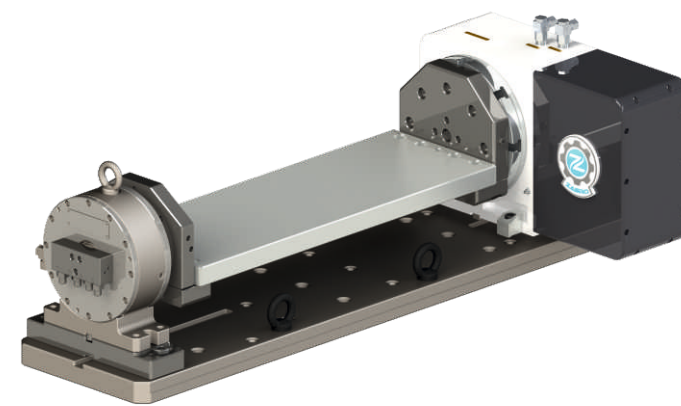


STRIP PROFILE
BENDING MACHINE



PRODUCTION SYSTEM WITH INDEXING TABLE

- MANUAL
- HYDRAULIC

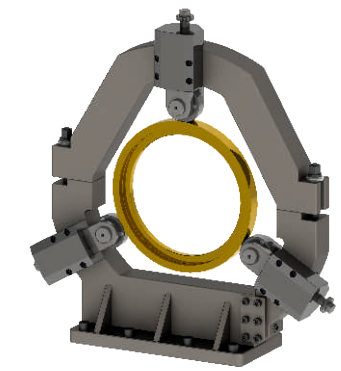


PRODUCTION SYSTEM WITH ROTARY TABLE

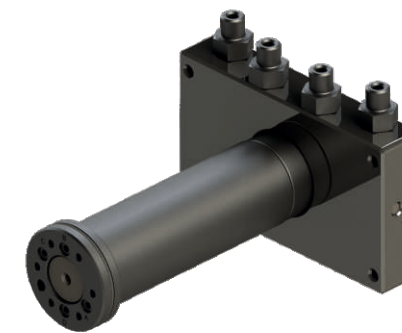
- MANUAL
- HYDRAULIC



FACE DRIVER

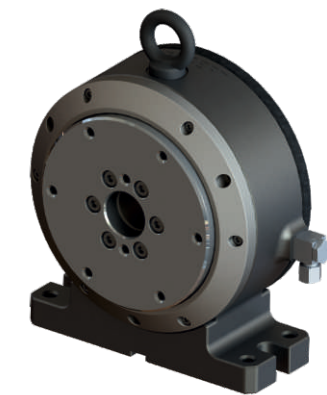


STEADY REST



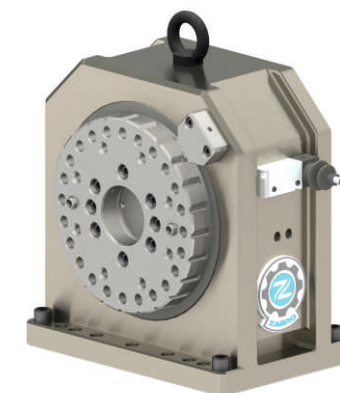
ROTARY UNION

- CRU-40-4CES
- CRU-50.8-4H
- CRU-60-4U
- CRU-70-4CM



FACE PLATE SUPPORT (WITH / WITHOUT BREAK)

- CFT-140
- CFT-160



MANUAL INDEXING TABLE (15 DEGREE)

- CMI-200-15
- CMI-250-15
- CMI-300-15



AUTO INDEXING TABLE (15 DEGREE)

- CSI-200-15
- CSI-250-15
- CSI-300-15



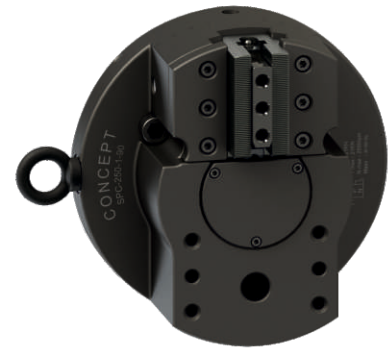
ONE JAW CHUCK

- SPC-160-90-1 (STROKE : 9.0mm)
- SPC-200-90-1 (STROKE : 12.0mm)



TWO JAW CHUCK

- SPC-160-90-2 (STROKE : 18.0mm)
- SPC-200-90-2 (STROKE : 24.0mm)



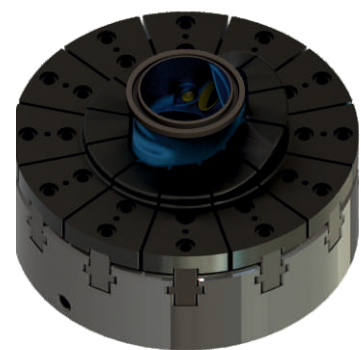
ONE JAW CHUCK

- SPC-250-90-1 (STROKE : 16.0mm)



TWO JAW CHUCK

- SPC-250-90-2 (STROKE : 32.0mm)



**PROFILE CLAMPING
12 JAW CHUCK**



SPRUE CUP

SELF ALIGNING PAD

Averaging of Casting and Forging Parts



MALE FLAT



MALE SERRATED

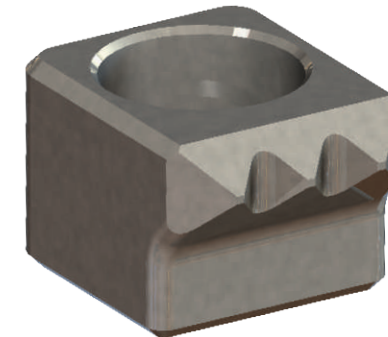


FEMALE FLAT

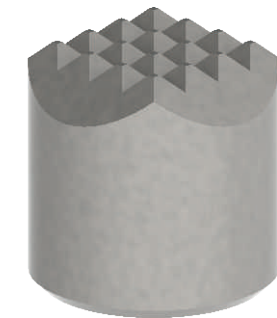


FEMALE SERRATED

CLAMPING BITE



SQUARE BITE



ROUND BITE

ROTORY TABLE

ZABRO MACHINES PVT. LTD

- ZRT-200
- ZRT-250

